

# 4D3N AMAZING KK & LABUAN TOUR (GV6-SIC)



**Day 1 ARRIVAL KOTA KINABALU (X)**  
Arrival at **Kota Kinabalu**, the state capital of Sabah, also known as "**The Land Below The Wind**". Meet and greet by our representative upon arrival. Start with our Kota Kinabalu Sightseeing Tour, **Sabah State Mosque, Floating Mosque, Poh Tou Temple, Tun Mustapha Building & Atkinson Clock Tower**. Then, transfer to check-in chooses hotel. Free & easy at own leisure and rest for the night.

**Day 2 CULTURAL VILLAGE – LABUAN OVERNIGHT (BREAKFAST/ LUNCH/ DINNER)**  
After breakfast, proceed to **Borneo Cultural Village**. There are a number of cultural houses to experience different tribes such as **Traditional Papar House, Murut House, Penampang House, Bajau House and Tidong House**. Each house was built by the descendant of the ethnic they represent. Each house has a unique activity where you can participate such as in Murut House-Blow Pipe; or Tidong House- start fire with just bamboo; Bajau House-playing musical instrument. After lunch, proceed to **Menumbok Jetty**. At 1430hrs, take about **2hrs by ferry to Labuan**. Check in to **Palm Beach Resort** upon arrival. After check in free at own leisure. You can enjoy the hotel facilities.

**Day 3 LABUAN CITY TOUR – WESTON WETLAND (BREAKFAST/LUNCH/DINNER)**  
After breakfast, start with **Labuan City Tour**. Visit **WAR WORLD II MEMORIALS PARK, THE CHIMNEY, PEACE PARK, NINE KINGS TEMPLE, WATER VILLAGE, LABUAN CENTRAL MARKET, LABUAN DUTY FREE**. After Lunch, back to Menumbok Jetty by ferry and proceed to the Next interesting tour – **Wetland Tour**. Upon arrival, have light refreshment with local Malaysian homemade cakes. On around 1700hrs, On boat for 1 ½ hours river cruise along the wetland and mangrove forest reserve to search for the **PROBOSCIS MONKEYS, Long tail macaque monkeys, silver leaf monkeys** and others interesting wildlife. As the darkness falls, witness the nature display light of millions of **FIREFLIES** along the riverbank and nearby swampy area and dinner will be serving. Back to Hotel.

**Day 4 DEPARTURE FROM KOTA KINABALU (BREAKFAST)**  
After breakfast, free at own leisure until transfer to airport for departure with a sweet memories.

## Highlight

### **WAR WORLD II MEMORIALS PARK :**

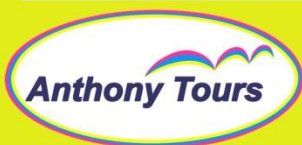
This is the largest WWII memorials park in Malaysia. Total 3,908 graves of soldiers who either died in Battle or captivity lie here. Most of the soldiers were Australians and British with some from the Punjab Signal Corp, New Zealand as well as a few locals.

### **PEACE PARK :**

This is where the 37th Japanese southern Army surrendered to the 9th division Australian imperial forces on 9th September 1945.

### **NINE KINGS TEMPLE :**

The largest Chinese temple in Labuan, It is a brilliant and colorful temple, one can also descend down the steps into hell room, a room to depict hell in Chinese mythology.



NO.1 Lot 20171, Jln Laksamana Abdul Razak, km2 Jln Tutong, Bandar Seri Begawan  
BA2111P.O.Box 696, Bandar Seri Begawan BS8671, Brunei Darussalam

Contact: **tour - (673) 222 8668 Ext: 285**

Email: [tour1@anthonytours.com](mailto:tour1@anthonytours.com)  
[inbound1@bruneitourism.com](mailto:inbound1@bruneitourism.com)

### **LABUAN DUTY FREE :**

Full of Alcohols drinks, Perfume & Chocolates and many others thing to buy.

### **WATER VILLAGE :**

Most of the residents are Brunei Malay. Many of the buildings in the village are wooden stilts, built on the waterfront and connected to each other by staggered boards. Here you can see the villagers fishing and hunting life.

### **THE CHIMNEY :**

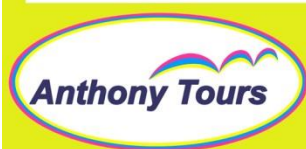
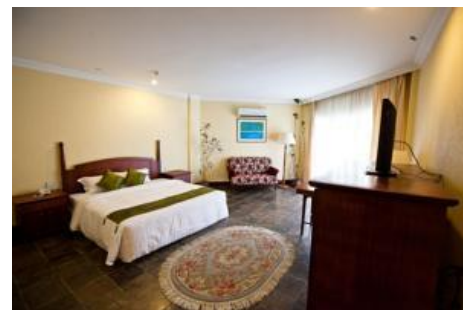
The 106 feet high structure is Labuan's most well-known landmark. It was built in the 1800's. The actual purpose of the Chimney is still a mystery but many believe it served as a ventilation shaft. Recent archaeological study found no traces of smoke to suggest its use as a chimney.

### **LABUAN CENTRAL MARKET :**

Completed in 2015 to replace the old market and Labuan Bazaar, it is an integrated building consist of wet & dry market, selling seafood, local products and souvenirs.

HOTEL / RESORT (BND)	TOUR FARE/PAX	+SGL SUPP	EXT NIGHT /PAX/NIGHT
3* CITITEL EXPRESS KK 城市快捷	389	212	55
3* SHANRI-LA DOWN TOWN 市区香格里拉	389	212	55
3* GAYA CENTRE 加雅中心	397	220	58
3* DREAMTEL 梦想酒店	392	215	55
3* KLAGAN 市区克拉甘酒店	410	232	65
4* GRANDIS 格兰蒂酒店	436	259	78
4* PROMENADE HOTEL 凯城酒店	436	259	78
5* THE SUTERA PACIFIC HOTEL 太平洋酒店	505	325	110
5* MAGELLAN SUTERA RESORT 麦哲伦酒店	535	357	126
5* SHANGRI-LA TANJUNG ARU RESORT 香格里拉丹绒	546	369	135

Package includes	Hotel Accommodations, Transport Service, All meals as per itinerary, Boat fee, Jetty Fee, BBQ fee, Snorkeling Equipment, Driver & Tour Guide Service
Package excludes	All personal expenses & portorage, Water Sports, Travel insurance coverage, Air tickets, Canopy walk camera fee
Terms & Condition <b>Tour Code: T4U06</b>	1) Tour fare is quote in BND valid Asia Market except Korea. 2) Tour fare is quote in low season period and LOWEST room CATEGORY rate. 3) Child with bed 90% of adult fare, Child without bed 70% of adult fare 4) SIC package Guide service in Mandarin, Cantonese, English or Malay only. 5) Tour fare are subject to be change without period notice.



NO.1 Lot 20171, Jln Laksamana Abdul Razak, km2 Jln Tutong, Bandar Seri Begawan  
BA2111P.O.Box 696, Bandar Seri Begawan BS8671, Brunei Darussalam

Contact: **tour - (673) 222 8668 Ext: 285**

Email: [tour1@anthonytours.com](mailto:tour1@anthonytours.com)  
[inbound1@bruneitourism.com](mailto:inbound1@bruneitourism.com)